

# CHICAGO

## Electric<sup>®</sup> Power Tools

*Lithium Powered*

### 10.8 VOLT CORDLESS DRIVER

**Model 96298**

#### OPERATING INSTRUCTIONS



Due to continuing improvements, actual product may differ slightly from the product described herein.



3491 Mission Oaks Blvd., Camarillo, CA 93011  
Visit our Web site at: <http://www.harborfreight.com>

**TO PREVENT SERIOUS INJURY, READ  
AND UNDERSTAND ALL WARNINGS AND  
INSTRUCTIONS BEFORE USE.**

Copyright<sup>®</sup> 2007 by Harbor Freight Tools<sup>®</sup>. All rights reserved. No portion of this manual or any artwork contained herein may be reproduced in any shape or form without the express written consent of Harbor Freight Tools.

**For technical questions or replacement parts, please call 1-800-444-3353.**

---

## PRODUCT SPECIFICATIONS

---

Power Source	1.3Ah Battery
Charge Time	5-7 Hours, after initial charge
Charger Input	120V ~60Hz
Chuck Type	1/4" Hex Shank Drive
Torque Settings	24
Variable Speed	0-500 RPM
Maximum Torque	80 in./lb.
Reversible	Yes
Trigger Lock	Yes
Weight	1.8 Pounds
Included	1 Hex shank adapter 6 Phillips head bits 3 flat head bits 1 Battery Charger

### Save This Manual

You will need this manual for the safety warnings and precautions, assembly, operating, inspection, maintenance and cleaning procedures, parts list and assembly diagram. Keep your invoice with this manual. Write the invoice number on the inside of the front cover. Keep this manual and invoice in a safe and dry place for future reference.

---

## GENERAL SAFETY RULES

---



**READ AND UNDERSTAND ALL INSTRUCTIONS**  
**Failure to follow all instructions listed below may result**  
**in electric shock, fire, and/or serious injury.**  
**SAVE THESE INSTRUCTIONS**

### Work Area

1. **Keep your work area clean and well lit.** Cluttered benches and dark areas invite accidents.
2. **Do not operate power tools in explosive atmospheres, such as in the presence of flammable liquids, gases, or dust.** Power tools create sparks which may ignite the dust or fumes.
3. **Keep bystanders and children away while operating a power tool.** Distractions can cause you to lose control. Protect others in the work area from debris such as chips and sparks. Provide barriers or shields as needed.

## Electrical Safety

1. **Avoid body contact with grounded surfaces such as pipes, radiators, ranges, and refrigerators.** There is an increased risk of electric shock if your body is grounded.
2. **Do not expose power tools to rain or wet conditions.** Water entering a power tool will increase the risk of electric shock.
3. **Do not abuse the Charger's power cord. Never use the Power Cord to carry the Charger or pull the Plug from an outlet. Keep the Power Cord away from heat, oil, sharp edges, or moving parts. Replace damaged Power Cords immediately.** Damaged Power Cords increase the risk of electric shock.

## Personal Safety

1. **Stay alert. Watch what you are doing, and use common sense when operating a power tool. Do not use a power tool while tired or under the influence of drugs, alcohol, or medication.** A moment of inattention while operating power tools may result in serious personal injury.
2. **Dress properly. Do not wear loose clothing or jewelry. Contain long hair. Keep your hair, clothing, and gloves away from moving parts.** Loose clothes, jewelry, or long hair can be caught in moving parts.
3. **Avoid accidental starting. Be sure the Rotation Button (6) is in the locked position before inserting the Battery.** Carrying power tools with your finger on the trigger, or inserting the Battery with the trigger depressed, invites accidents.
4. **Do not overreach. Keep proper footing and balance at all times.** Proper footing and balance enables better control of the power tool in unexpected situations.
5. **Use safety equipment. Always wear eye protection.** Dust mask, nonskid safety shoes, hard hat, or hearing protection must be used for appropriate conditions. Always wear ANSI-approved safety goggles when working with this tool.

## Tool Use and Care

1. **Use clamps (not included) or other practical ways to secure and support the workpiece to a stable platform.** Holding the work by hand or against your body is unstable and may lead to loss of control.
2. **Do not force the tool. Use the correct tool for your application.** The correct tool will do the job better and safer at the rate for which it is designed.
3. **Do not use the power tool if the trigger does not operate it.** Any tool that cannot be controlled with the trigger is dangerous and must be replaced.

4. **Remove the battery from the tool and set the Rotation Button (6) to the center, locked position, before making any adjustments, changing accessories, or storing the tool.** These preventive safety measures reduce the risk of starting the tool accidentally.
5. **Store idle tools out of reach of children and other untrained persons.** Tools are dangerous in the hands of untrained users.
6. **Maintain the Cordless Driver with care. Keep screwdriver bits clean.** Properly maintained accessories with a clean edge are less likely to bind and are easier to control. Do not use a damaged tool or accessory. Tag damaged tools “Do not use” until repaired.
7. **Check for misalignment or binding of moving parts, breakage of parts, and any other condition that may affect the tool’s operation. If damaged, have the tool serviced before using.** Many accidents are caused by poorly maintained tools.
8. **Use only accessories that are recommended by the manufacturer for your model.** Accessories that may be suitable for one tool may become hazardous when used on another tool.

### Service

1. **Tool service must be performed only by qualified repair personnel.** Service or maintenance performed by unqualified personnel could result in a risk of injury.
2. **When servicing a tool, use only identical replacement parts. Follow instructions in this manual.** Use of unauthorized parts or failure to follow maintenance instructions may create a risk of electric shock or injury.



---

## **SPECIFIC SAFETY RULES**

---

1. **Maintain a safe working environment.** Keep the work area well lit. Make sure there is adequate surrounding workspace. Always keep the work area free of obstructions, grease, oil, trash, and other debris. Do not use the Cordless Driver in areas near flammable chemicals, dusts, and vapors. Do not use this product in a damp or wet location.
2. **Maintain labels and nameplates on the Cordless Driver.** These carry important information. If unreadable or missing, contact Harbor Freight Tools for a replacement.
3. **When using the Cordless Driver, always maintain a firm grip on the tool with both hands.**
4. **Hold the tool by its insulated gripping surfaces when performing an operation where the Cordless Driver may contact hidden wiring.** Contact with a

“live” wire will make exposed metal parts of the Cordless Driver “live” and shock the operator.

5. **Do not use the Cordless Driver or Charger if it has been dropped, damaged, left outdoors, or immersed in liquid.**
6. **To avoid electric shock, do not pull or carry the Charger by its Power Cord or pull the Power Cord around sharp corners or edges.** Do not unplug the Charger by pulling on the Power Cord. Keep the Power Cord away from heated surfaces.
7. **To avoid electrical shock, do not handle the Charger, the Adapter, or the Cordless Driver with wet hands.**
8. **Keep the Handles of the Cordless Driver dry, clean, and free from oil or grease.**
9. **Avoid unintentional starting.** Make sure you are prepared to begin work before turning on the Cordless Driver.
10. **Never leave the Charger unattended when it is plugged into an electrical outlet.** Unplug the Charger from its electrical outlet before leaving. Place the Charger on a solid surface such as a garage floor; never place on anything flammable.
11. **PROPER BATTERY PACK CARE: Battery Pack (19) leakage may occur under extreme usage or temperature conditions.** If Battery Pack fluid comes in contact with skin, rinse with lemon juice and vinegar then wash with soap and water. If the fluid comes into contact with the eyes, flush with water for several minutes and contact a doctor immediately. Never burn the Battery Pack, as it can explode in a fire. Do not charge the Cordless Driver with a leaking Battery Pack. Contact local solid waste authorities for instructions on correct disposal or recycling of the Battery Pack.
12.  **WARNING!** Some dust created by power sanding, sawing, grinding, drilling, and other construction activities, contain chemicals known (to the State of California) to cause cancer, birth defects or other reproductive harm. Some examples of these chemicals are: lead from lead-based paints, crystalline silica from bricks and cement or other masonry products, arsenic and chromium from chemically treated lumber. Your risk from these exposures varies, depending on how often you do this type of work. To reduce your exposure to these chemicals: work in a well ventilated area, and work with approved safety equipment, such as dust masks that are specially designed to filter out microscopic particles. (California Health & Safety Code § 25249.5, *et seq.*)
13.  **WARNING!** People with pacemakers should consult their physician(s) before using this product. Operation of electrical equipment in close proximity to a heart pacemaker could cause interference or failure of the pacemaker.

---

## GROUNDING

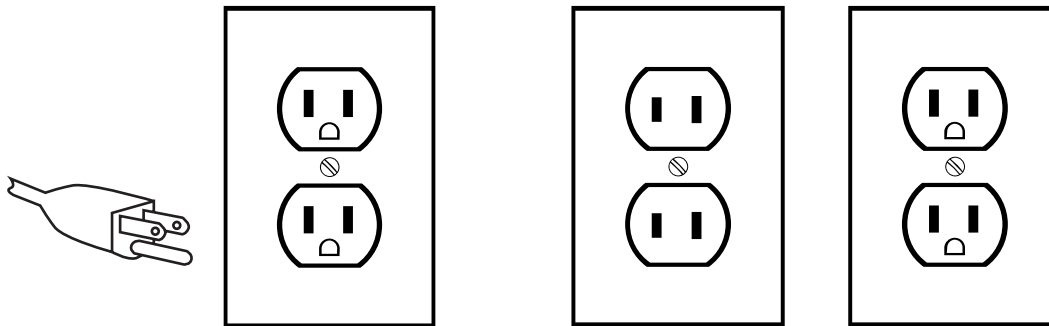
---

 **WARNING!**

**Improperly connecting the grounding wire can result in the risk of electric shock. Check with a qualified electrician if you are in doubt as to whether the outlet is properly grounded. Do not modify the power cord plug provided with the tool. Never remove the grounding prong from the plug. Do not use the tool if the power cord or plug is damaged. If damaged, have it repaired by a service facility before use. If the plug will not fit the outlet, have a proper outlet installed by a qualified electrician.**

### GROUNDING TOOLS: TOOLS WITH THREE PRONG PLUGS

1. Tools marked with “Grounding Required” have a three wire cord and three prong grounding plug. The plug must be connected to a properly grounded outlet. If the tool should electrically malfunction or break down, grounding provides a low resistance path to carry electricity away from the user, reducing the risk of electric shock. **(See Figure A.)**
2. The grounding prong in the plug is connected through the green wire inside the cord to the grounding system in the tool. The green wire in the cord must be the only wire connected to the tool’s grounding system and must never be attached to an electrically “live” terminal. **(See Figure A.)**
3. Your tool must be plugged into an appropriate outlet, properly installed and grounded in accordance with all codes and ordinances. The plug and outlet should look like those in the following illustration. **(See Figure A.)**



**FIGURE A**

**FIGURE B.**

### DOUBLE INSULATED TOOLS: TOOLS WITH TWO PRONG PLUGS

1. Tools marked “Double Insulated” do not require grounding. They have a special double insulation system which satisfies OSHA requirements and complies with the applicable standards of Underwriters Laboratories, Inc., the Canadian Standard Association, and the National Electrical Code. **(See Figure B.)**

2. Double insulated tools may be used in either of the 120 volt outlets shown in the preceding illustration. **(See Figure B.)**




### **EXTENSION CORDS**

1. ***Grounded*** tools require a three wire extension cord. ***Double Insulated*** tools can use either a two or three wire extension cord.
2. As the distance from the supply outlet increases, you must use a heavier gauge extension cord. Using extension cords with inadequately sized wire causes a serious drop in voltage, resulting in loss of power and possible tool damage. **(See Chart A, next page.)**
3. The smaller the gauge number of the wire, the greater the capacity of the cord. For example, a 14 gauge cord can carry a higher current than a 16 gauge cord. **(See Chart A.)**
4. When using more than one extension cord to make up the total length, make sure each cord contains at least the minimum wire size required. **(See Chart A.)**
5. If you are using one extension cord for more than one tool, add the nameplate amperes and use the sum to determine the required minimum cord size. **(See Chart A.)**
6. If you are using an extension cord outdoors, make sure it is marked with the suffix "W-A" ("W" in Canada) to indicate it is acceptable for outdoor use.
7. Make sure your extension cord is properly wired and in good electrical condition. Always replace a damaged extension cord or have it repaired by a qualified electrician before using it.
8. Protect your extension cords from sharp objects, excessive heat, and damp or wet areas.

RECOMMENDED MINIMUM WIRE GAUGE FOR EXTENSION CORDS* (120 OR 240 VOLT)					
NAMEPLATE AMPERES (at full load)	EXTENSION CORD LENGTH				
	25 Feet	50 Feet	75 Feet	100 Feet	150 Feet
0 – 2.0	18	18	18	18	16
2.1 – 3.4	18	18	18	16	14
3.5 – 5.0	18	18	16	14	12
5.1 – 7.0	18	16	14	12	12
7.1 – 12.0	18	14	12	10	-
12.1 – 16.0	14	12	10	-	-
16.1 – 20.0	12	10	-	-	-

**Chart A** \* Based on limiting the line voltage drop to five volts at 150% of the rated amperes.

### SYMBOLOLOGY

	Double Insulated
	Canadian Standards Association
	Underwriters Laboratories, Inc.
V~	Volts Alternating Current
A	Amperes
n <sub>0</sub> xxxx/min.	No Load Revolutions per Minute (RPM)



---

## UNPACKING

---

When unpacking, check to make sure that the product is complete and undamaged. If any parts are missing or broken, please call Harbor Freight Tools at the number shown on the cover of this manual as soon as possible.

---

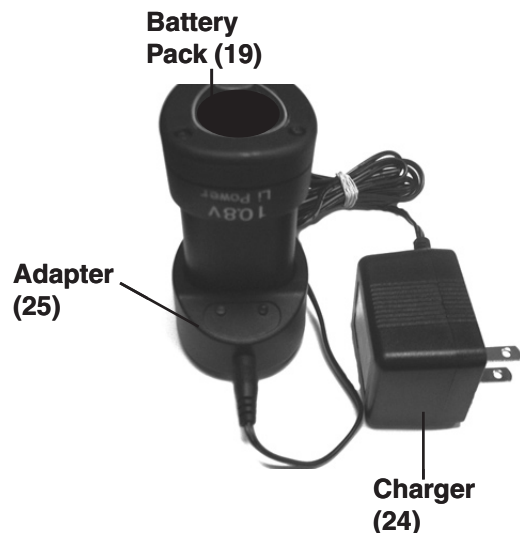
## CHARGING (INITIAL CHARGE)

---

1. The Battery Pack (19) requires charging before use. The recommended initial charge time is twelve hours, prior to first use of the Cordless Driver.

**Note:** Always switch to a fresh battery when tool performance begins to diminish. Severe heat is destructive to batteries; the more heat generated, the faster the battery will lose power. A battery that gets too hot can be permanently damaged. Never over-discharge a battery by using the tool after performance decreases. Never attempt to discharge a battery by continuing to pull the trigger. When tool performance begins to diminish, stop the tool, recharge the battery, and use a fully charged battery for optimal performance.

2. When the Battery Pack-after the initial charge-requires recharging it must charge for five to seven hours in order to operate at full power.
3. Charging room temperature: 50° F. – 104° F.
4. Depress both buttons at the rear of the Battery Pack and slide the unit down to detach from the Driver.
5. Insert the Battery Pack (19) into the Charger (24) (the Battery Pack can only fit into the Charger in one position), plug Charger into Adapter (25), and plug Adapter into any standard electrical outlet.
6. While charging, the Battery Pack, Charger, and Adapter may become warm to the touch. This is normal, and does not indicate a problem.
7. When the Battery Pack is in the Charger, both the red and green lights on the Charger will be illuminated while charging, when the Battery Pack is fully charged the red light will turn off, indicating that the Battery Pack is ready for use. Once the Battery Pack is fully charged, unplug the Charger from the electrical outlet, unplug the Charger from the electrical outlet and remove the Battery Pack from the Adapter.



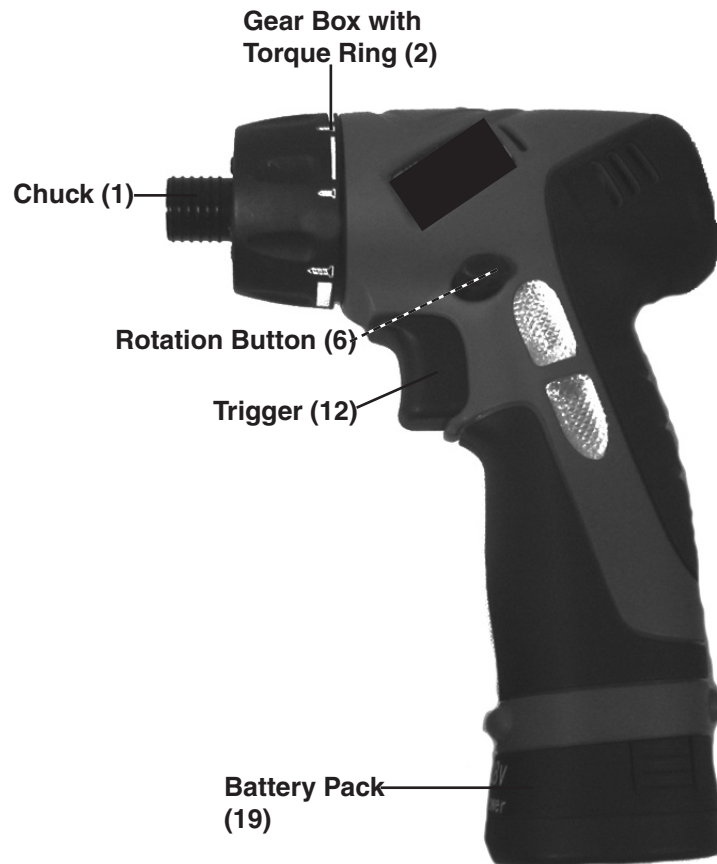
---

## OPERATING INSTRUCTIONS

---

**NOTE:** For additional information regarding the parts listed in the following pages, refer to the **Parts List & Assembly Diagram**.

**⚠ WARNING!** Remove the Battery Pack (19) from the tool and set the Rotation Button (6) to its center, locked, position before making any adjustments, changing accessories, or storing the tool.



1. To install a screwdriver bit, insert the correct Bit (26) for the application into the magnetic Bit Adapter (27). **Never insert one of the included Bits (26) directly into the Chuck. A smaller gauge than 1/4" will not be firmly secured and may result in injury or property damage.** With the Chuck (1) pointing away from you, pull gently on the Chuck sleeve and insert the Bit Adapter into the Chuck. Release the Chuck sleeve and the Bit Adapter will lock firmly in place. The Chuck accepts 1/4" Hex Shank only. To remove the Bit Adapter (27), reverse the above-mentioned procedure.
2. Secure the workpiece in place, using a vise or clamps (not included).

**Note:** Never change Torque Setting while the Cordless Driver is still rotating, as this can damage the Cordless Driver.

3. Selecting an appropriate torque setting (1-24):


The different sizes of screws pictured on the Torque Ring are an indication of how much torque the Cordless Driver will apply to the bit before the clutch slips, allowing the bit to stop and helping to prevent damage to the screw, bit, or workpiece. The larger the screw, the more torque is applied before the clutch slips. Always start with a lower torque to help prevent damage. This Cordless Driver also has torque settings between the screw markings to allow a greater range of selection.

4. Set the driving torque by turning the Gear Box with Torque Ring (2) so that it lines up with the Arrow on the center top of the Cordless Driver.
5. When driving in light gauge metal or wood, use a wooden block to back up the material and prevent damage to the workpiece.
6. Mark the center of the hole for the screw with a center punch (not included) to give a Bit a start and to prevent it from “walking”.
7. Insert the fully charged Battery Pack (19) into the handle of the Cordless Driver.
8. The Rotation Button (6) allows you to change the rotational direction of the Cordless Driver. For a clockwise rotation, move the Rotation Button to the right. For a counterclockwise rotation, move the Rotation Button to the left. The center position locks the Trigger (12) to prevent the Cordless Driver from operating.
9. Hold the Cordless Driver firmly with both hands, as torque from the Motor can cause the tool to twist.
10. Operate the Driver by squeezing the Trigger (12). The speed can be controlled by varying the pressure on the Trigger.
11. If the clutch starts slipping before the screw is in all the way, stop the driver, put the Rotation Button (6) in the center position and change the torque setting. Reset the rotation direction before continuing.
14. Release the Trigger (12) to stop the Driver, put the Rotation Button in the center position, and remove the bit from the Bit Adapter.

---

## **INSPECTION, MAINTENANCE, AND CLEANING**

---

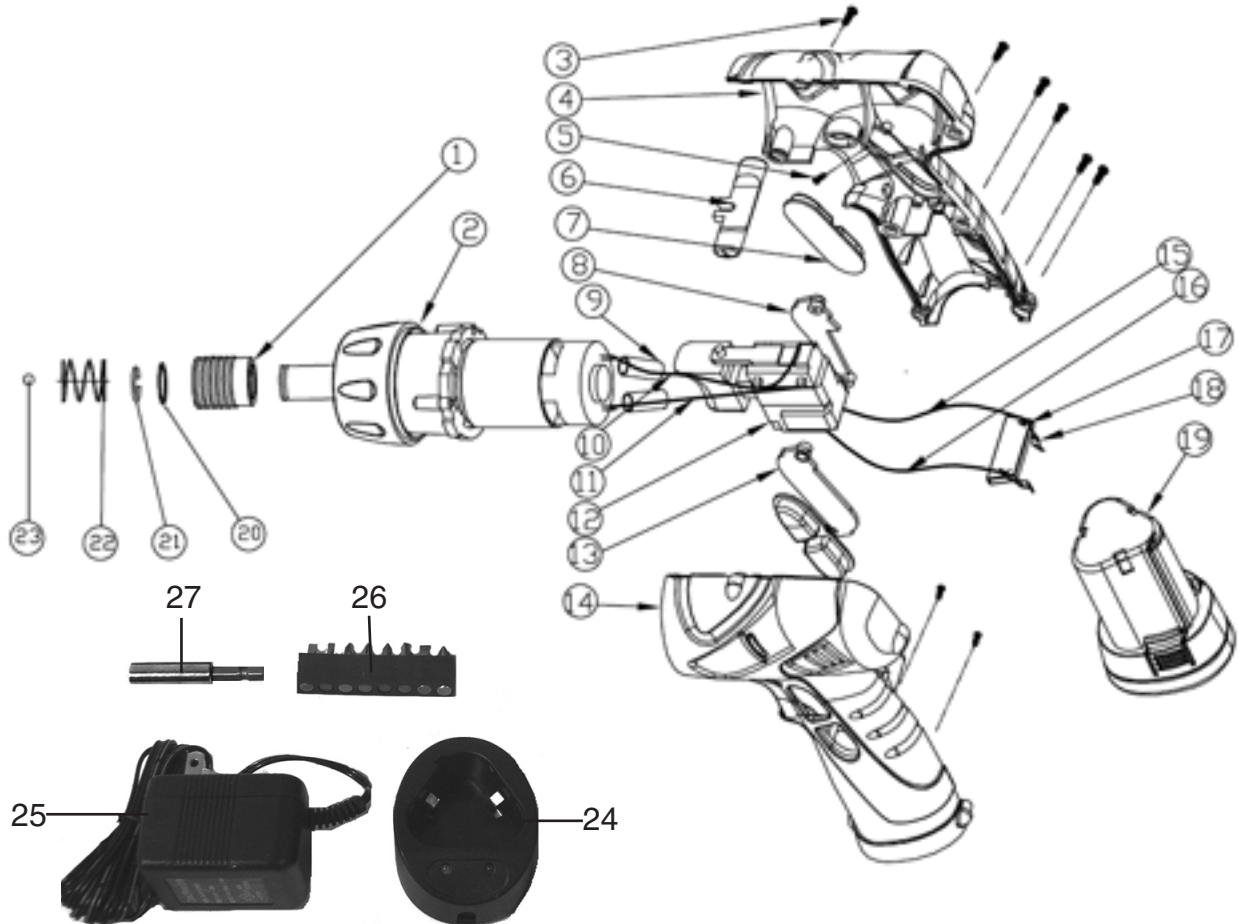
1.  **WARNING!** Remove the Battery Pack (19) from the tool and set the Rotation Button (6) to the center, locked, position before performing any inspection, maintenance, or cleaning.
2. **BEFORE EACH USE**, inspect the general condition of the Cordless Driver. Check for misalignment or binding of moving parts, cracked or broken parts, leaking Battery Pack, damaged Charger wiring, chipped or broken Bits, and any other condition that may affect its safe operation. If abnormal noise or vibration occurs, have the problem corrected before further use.  
**Do not use damaged equipment.**

3. **After each use:** With a soft brush or cloth remove all dirt and debris from the Cordless Driver. Do not immerse the Cordless Driver in any liquids.
4. **When the battery needs to be replaced remember that the lithium battery in this tool must be recycled or disposed of properly.**

## PARTS LIST

Part	Description	Qty	Part	Description	Qty
1	Chuck	1	15	Black Wire	1
2	Gear box with Torque Ring	1	16	Red Wire	1
3	Screw	7	17	Bracket	1
4	Right Body	1	18	Contact Plate	2
5	Screw	4	19	Battery Pack	1
6	Rotation Button	1	20	Ring	1
7	Clear Soft Grip	1	21	Steel Wire Ring	1
8	Right Plate	1	22	Compress Spring	1
9	Tube	1	23	Steel Ball	9
10	Black Wire	1	24	Charger	1
11	Red Wire	1	25	Adapter	1
12	Trigger	1	26	Screwdriver Bits (in rubber sleeve)	9
13	Left Plate	1	27	Bit Adapter	1
14	Left Body	1			

## ASSEMBLY DIAGRAM



---

## PLEASE READ THE FOLLOWING CAREFULLY

---

THE MANUFACTURER AND/OR DISTRIBUTOR HAS PROVIDED THE PARTS LIST AND ASSEMBLY DIAGRAM IN THIS MANUAL AS A REFERENCE TOOL ONLY. NEITHER THE MANUFACTURER OR DISTRIBUTOR MAKES ANY REPRESENTATION OR WARRANTY OF ANY KIND TO THE BUYER THAT HE OR SHE IS QUALIFIED TO MAKE ANY REPAIRS TO THE PRODUCT, OR THAT HE OR SHE IS QUALIFIED TO REPLACE ANY PARTS OF THE PRODUCT. IN FACT, THE MANUFACTURER AND/OR DISTRIBUTOR EXPRESSLY STATES THAT ALL REPAIRS AND PARTS REPLACEMENTS SHOULD BE UNDERTAKEN BY CERTIFIED AND LICENSED TECHNICIANS, AND NOT BY THE BUYER. THE BUYER ASSUMES ALL RISK AND LIABILITY ARISING OUT OF HIS OR HER REPAIRS TO THE ORIGINAL PRODUCT OR REPLACEMENT PARTS THERETO, OR ARISING OUT OF HIS OR HER INSTALLATION OF REPLACEMENT PARTS THERETO.

---

## LIMITED 90 DAY WARRANTY

---

Harbor Freight Tools Co. makes every effort to assure that its products meet high quality and durability standards, and warrants to the original purchaser that this product is free from defects in materials and workmanship for the period of 90 days from the date of purchase. This warranty does not apply to damage due directly or indirectly, to misuse, abuse, negligence or accidents, repairs or alterations outside our facilities, criminal activity, improper installation, normal wear and tear, or to lack of maintenance. We shall in no event be liable for death, injuries to persons or property, or for incidental, contingent, special or consequential damages arising from the use of our product. Some states do not allow the exclusion or limitation of incidental or consequential damages, so the above limitation of exclusion may not apply to you. THIS WARRANTY IS EXPRESSLY IN LIEU OF ALL OTHER WARRANTIES, EXPRESS OR IMPLIED, INCLUDING THE WARRANTIES OF MERCHANTABILITY AND FITNESS.

To take advantage of this warranty, the product or part must be returned to us with transportation charges prepaid. Proof of purchase date and an explanation of the complaint must accompany the merchandise. If our inspection verifies the defect, we will either repair or replace the product at our election or we may elect to refund the purchase price if we cannot readily and quickly provide you with a replacement. We will return repaired products at our expense, but if we determine there is no defect, or that the defect resulted from causes not within the scope of our warranty, then you must bear the cost of returning the product.

This warranty gives you specific legal rights and you may also have other rights which vary from state to state.

**3491 Mission Oaks Blvd. • PO Box 6009 • Camarillo, CA 93011 • (800) 444-3353**

**Record Product's Serial Number Here:** \_\_\_\_\_

**Note:** If product has no serial number, record month and year of purchase instead.

**Note:** Some parts are listed and shown for illustration purposes only, and are not available individually as replacement parts.